

1st Annual Fall Harvest Limousin Sale

Sale Manager: Bouchard Livestock International
Auctioneer: Dave Carson

The 2010 Fall Harvest was located at Carson Sales Facility and was a huge success. A large crowd gathered and cattle were in high demand selling throughout Canada.

1st Annual Fall Harvest Limousin Sale

Description	# of head	Gross	Average
Open Heifers	14	\$46,300	\$3,307.14
Bred Cows	11	\$24,500	\$2,227.27
Bred Heifers	19	\$50,450	\$2,655.26
Cow/Calf	1	\$6,800	\$6,800.00
Sale Average	45	\$128,050	\$2,845.56

Fall Harvest Sale Highlights



LOT 102 **TMF Miss 606X**
FALL HARVEST BW: 90

OPEN HEIFER
RED
POLLED
94%
CPFD200614
TMF 606X
10 JAN 2010

SIRE: EXLR LIMITED EDITION 765J
EXLR LIMITED EDITION 622L
COSC GABRIELLA 4446

DAM: ANLC LIBERTY BELL 1295L
EXLR LADY DASTION 262F

EXLR POLLED BENCHMARK
WULF'S BLEND 7021G
COLE FIRST DOWN 46D
TUBB STORM BREKEN 299B
GOLDVIEW KRUGERRAND
SDF LOWESOME DOVE 632W
WULF'S COUNT DOWN
CVR LSAY DASTION 573D

GEST	CE	BWT	WWT	YWT	PWG	CEM	MILK	MWWT	SC	DOC	STAY
-1.4	4.0	3.4	40.1	64.5	N/A	-2.2	28.0	48.1	0.5	12.9	N/A

Lot 102

Here is a full sister to TMF Rhythm 72R. Rhythm was Reserve Grand Champion Female in 2007 at Agribition and has been a tremendous producer for Greenwood Limousin, Lloydminster, SK. This calf is full of performance and eye appeal, just like her sister.



LOT 104 **TMF Miss 603X**
FALL HARVEST BW: 70

OPEN HEIFER
RED
POLLED
92%
CPFD200613
TMF 603X
4 JANUARY 2010

SIRE: ROMN JUSTICE
ROMN MADE TO ORDER
ROMN MISS THICK 34K

DAM: EXLR DAKOTA 353G
TOP MEADOW 405M
NP SHAMELESS GAL 123G

ROMN FORTUNE
ROMN LADY ROCK 57G
DT POLLED THICK SET
ROMN MISS CLEO 400
WULF'S COUNT DOWN
CANE RIDGE DAPHNE 011D
JCL BLACK OUT
SCF JAMBOREE 405V

GEST	CE	BWT	WWT	YWT	PWG	CEM	MILK	MWWT	SC	DOC	STAY
-2.2	6.3	3.3	48.0	91.7	N/A	7.0	25.8	49.8	1.1	19.0	N/A

603X is a big time heifer calf loaded with performance and pedigree. The Shameless family is hard to beat in the ring or pasture. She is out of TMF 405M, the flushmate sister of TMF Morgynne, former Canadian National Champion.



LOT 144 **WGL Wish List**
FALL HARVEST BW: 86

BRED HEIFER
RED
POLLED
FB
CPFD194291
WGL 11W
12 FEB 2009

SIRE: EAFF MEDALLION 462M
CFSV POLLED MAJESTY 312S
SVL POLLED GENUINE 804L

DAM: KOYLE SUPER TEST
CLAYTON MIRACLE
ORBIT VALLEY HOLLY

EAFF MR MEDALIST 252J
EAFF HAIDEE 080F
STZC POLLED GUTHRIE 826H
WC MISS NADINE 140
GKF CANADIAN RANGER
CEDAR PATCH GENEVIVE
HALLMARK
COTTON CANDY PEACHES

GEST	CE	BWT	WWT	YWT	PWG	CEM	MILK	MWWT	SC	DOC	STAY
-1.3	8.7	2.0	33.8	68.7	34.9	3.6	20.6	37.5	0.0	5.4	N/A

AI Bred to EAFF Rejuvenator on May 3/10 (safe)

Pasture Exposed to Richmond Wyatt from May 31 - Aug 28/10

A smooth double polled Fullblood female that has the makings of a great herd builder. Depth, volume and disposition are what she brings to the table. 11W's mother is a constant producing daughter of JCL Mill Iron and has been a keeper since we purchased the Clayton Limousin herd. Add in her safe breeding to EAFF Rejuvenator, and she will be on every ones Wish List come sale day.



LOT 106 **TMF Miss 614W**
FALL HARVEST BW: 100 WW: 649 YL: 101.4

BRED HEIFER
BLACK
POLLED
93%
CPFD196199
TMF 614W
6 FEB 2009

SIRE: GPFF BLAQUE RULON
FWLY BIG TIME
CLLL BANANA CREAM PIE

DAM: OTSS HARD CASH 0500Y
CHBI 373J
STBR JAZZABELLE 373B

BLACK DIAMOND
QUAIL RUN RAMONDA PB
WULF'S DAWSON
PLLP BETSY 2005B
WCC DOLLAR BILL
GKF CANADIAN RANGER
EXLR LIVLY 084F
EXLR DAKOTA 353G
STBR OLY'S JEZEBEL 140Y

GEST	CE	BWT	WWT	YWT	PWG	CEM	MILK	MWWT	SC	DOC	STAY
1.8	-1.1	6.7	58.9	97.3	38.4	-0.5	21.1	50.9	0.6	4.4	N/A

Bred to Wulf's Blaque Rulon

P.E. to TMF Uptown 618U from April 16 to May 31/10

614W is the top of our bred heifer pen. She is soft middled, square hipped and very attractive through the front end. CHBI 373J has been a top donor and very attractive through the front end. CHBI 373J has been a top donor and has 11 daughters doing a tremendous job in production. 614W would be a powerful contender on the show road this fall.



LOT 150 **HOLLEES Wildflower**
FALL HARVEST BW: 80 WW: 662

OPEN HEIFER
RED
POLLED
94%
CPFD197351
EY 20L
12 SEP 2009

SIRE: CARROUSELS PEAK POWER
TOP MEADOW TOTAL PACKAGE 10T
TOP MEADOW 543P

DAM: TMF LANDMARK 601L
TOP MEADOW SUNFLOWER 619S
GREENWOOD KATS MEOW

GPFF BLAQUE RULON
HC CHERISH
EXLR MATRIX 075M
DBRO FAWN 212F
EXLR DAKOTA 353G
NP SHAMELESS HUSSEY 2037G
SLV LOWFC PLANET HOLLYWOOD
GRNWOOD CALENDAR GIRL

GEST	CE	BWT	WWT	YWT	PWG	CEM	MILK	MWWT	SC	DOC	STAY
-3.4	8.7	1.9	45.4	81.8	N/A	5.0	30.9	53.6	0.5	10.3	N/A

Extra Age Open Heifer

This striking profiled female is in our 2010 show string and sports a pedigree and style that should be very competitive. She is also from our fall herd with a gentle disposition, beautiful lines and structurally correct. Whatever part of your programme Wildflower would fit into we don't think she will disappoint.



LOT 122 **KOYLE Madame 3X**
FALL HARVEST BW: 85

OPEN HEIFER
BLACK
POLLED
92%
CPFD200495
DKP 3X
3 JAN 2010

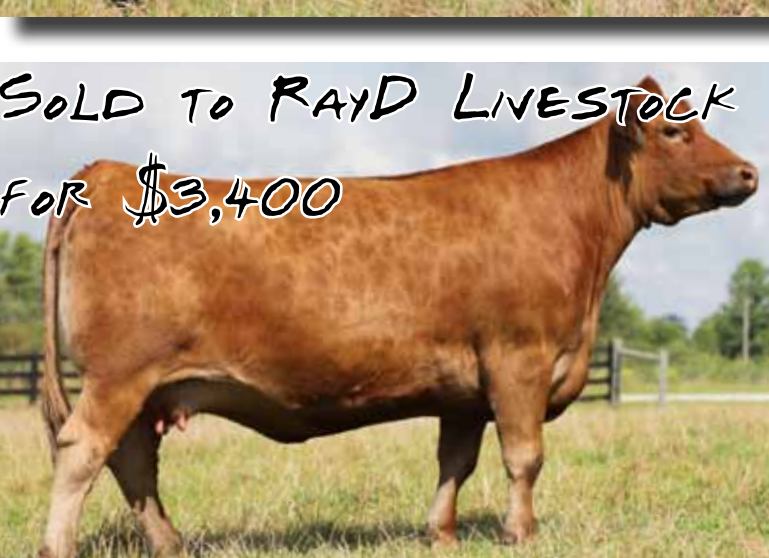
SIRE: PFF BLAQUE RULON
CARROUSELS PEAK POWER
HC CHERISH

DAM: EXLR NEW GENERATION 071M
KOYLE SCARLETTE 0
TOP MEADOW 449M

BLACK DIAMOND
QUAIL RUN RAMONDA PB
HC POLLED MANHATTEN
MACO MISTY MORNING
AUTO BLACK DAKOTA 129J
EXLR LIVLY 084F
EXLR DAKOTA 353G
OSUL APRILS CHOICES

GEST	CE	BWT	WWT	YWT	PWG	CEM	MILK	MWWT	SC	DOC	STAY
-2.0	2.7	4.0	43.6	79.7	N/A	1.2	26.3	48.1	0.4	18.4	N/A

A heifer calf that ditros her National Champion dam with power! A very growthy individual with tremendous bone and foot. A heifer that would be an awesome bull producer. Full sister is owned by Mark Angus and was Res. Grand at the 2009 Manitoba Ag Ex.



LOT 129 **EXLR Jenna 020L**
FALL HARVEST

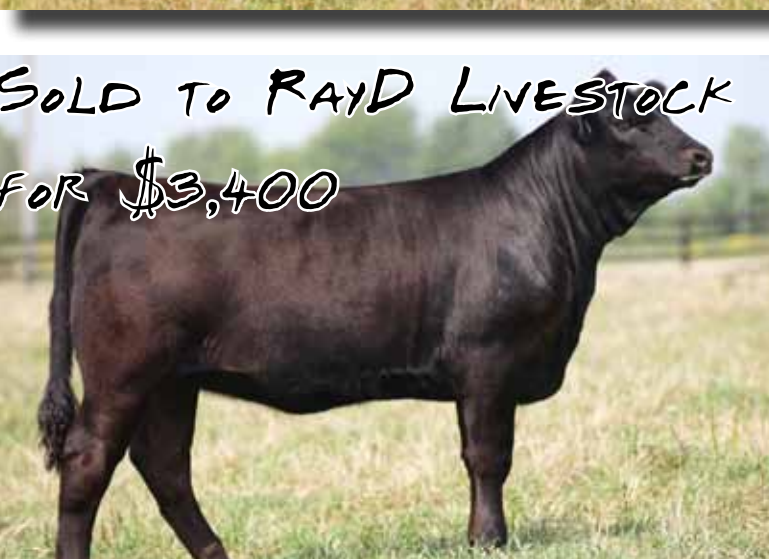
BRED COW
RED
POLLED
93%
NPF 1626 168
EXLR 20L
5 JAN 2001

SIRE: KRMC BLACK LEGACY
EXLR POLLED RESOLVE
LKCC SMITH CATTLE

DAM: WULF'S COUNT DOWN
EXLR 817F
YKCC JENNA

NICO POLLED LEGACY
HOLJO
LKCC BLACK LOTO 1079W
SMITH CATTLE
KCC TOMAHAWKS TOUCHDOWN
YKCC WOLFETTE
MISS COPPY CAT 410X
SWPL ARIANNE

GEST	CE	BWT	WWT	YWT	PWG	CEM	MILK	MWWT	SC	DOC	STAY
-1.2	7.6	0.5	30.8	63.4	32.5	-1.9	21.5	36.9	0.6	9.0	20.7



LOT 129A **KOYLE Madame 24X**
FALL HARVEST BW: 78

OPEN HEIFER
BLACK
POLLED
92%
CPFD200084
DKP 24X
13 FEB 2010

SIRE: GPFF BLAQUE RULON
FWLY BIG TIME
CLLL BANANA CREAM PIE

DAM: EXLR POLLED RESOLVE
EXLR JENNA 020L
NPF 1345475 EXLR 817F

BLACK DIAMOND
QUAIL RUN RAMONDA PB
WULF'S DAWSON
PLLP BETSY 2005B
KRMC BLACK LEGACY
LKCC SMITH CATTLE
WULF'S COUNT DOWN
YKCC JENNA

GEST	CE	BWT	WWT	YWT	PWG	CEM	MILK	MWWT	SC	DOC	STAY
0.3	3.8	3.4	41.9	77.8	N/A	-1.4	19.5	40.5	0.7	8.8	N/A

Lot 129

AI Bred to CJSL Windfall on April 15/10

Jenna has been a prolific producer in our Herd. Dam of the 2008 National Champion Bull and twice Royal Grand Bull, Koyle Techumseh, and high selling Bull at the Agribition Sale to Rob Garner. We retain several broody daughters in our Herd. Her mating with one of the most talked about bulls in 2010 Denver, CJSL Windfall, should be very exciting.

Lot 129A

Jenna's daughter has an exciting future ahead of her. This Big Time daughter is deep in her rib, flank and quarter, while maintaining a very clean front and smooth shoulder. Once again Jenna has proven her deep breeding quality!